



UPDATE FROM MR ASKEW

Dear All,

As we come to the end of another busy and successful term, I would like to take this opportunity to thank you for your continued support. Your encouragement, involvement, and partnership play such a vital role in the life of our school and in the success of our pupils. We are truly grateful for everything you do.

I would like to extend a heartfelt thank you to all our dedicated staff. Their hard work, commitment, and care for the children shine through every day. We are fortunate to have such a passionate and talented team supporting our school community.

I would like to also take this opportunity to once again thank the hard work of the PTA, and all of the volunteers that contributed towards making the Christmas Fair another successful event. I know their attention is already turning towards the circus later in the summer...

At the end of this term, we will be saying a warm and very heartfelt goodbye to Mrs Heijne, who is leaving us after 17 years of service. She has contributed to the school in so many ways during her time with us, both in the classroom and as one of the school leaders. We thank her for her dedication, kindness, and professionalism, and we wish her every happiness in her next chapter.

As the festive season is here and we have been enjoying the nativity, carol service, Rocksteady concert and our Christmas dinners, we would also like to wish you and your families a very happy Christmas and a wonderful New Year. May the holidays bring rest, joy, and special time with loved ones.

Thank you once again for your ongoing support. We look forward to welcoming the children back in the new year.

Kind regards
Mr Askew

DECEMBER ISSUE 2025



BOTTISHAM COMMUNITY PRIM. SCH. NEWSLETTER

COURAGE, CURIOSITY, COMPASSION, COMMITMENT & RESPECT



CHRISTMAS HOOPS IN THE HALL.
THIS YEAR'S THEME IS
CHRISTMAS ALL AROUND THE
WORLD.

In this issue:

- Eco Council
- Our Librarians
- Panathlon Challenge
- Yoga Festival
- Acorns - Preschool
- Apply for a place in reception 2026
- Word from our CEO
- Values and school priorities
- E-Safety Parent guide
- Prospects Trust
- School and PTA events
- Attendance

Eco Council 2025/26



We are pleased to announce that our new Eco Council for this year has been named! Congratulations to:

KS1: Callum (Hazel), Mia (Beech)

KS2: Freddie & Madison (Birch), Henry (Elm), Isla & Aurora (Maple), Amelie (Willow) and Laila-Faye (Sycamore)

The new Eco Council has already been busy planting wildlife-friendly bulbs around the community orchard and small forest area for some early spring colour and food for pollinators next year. You may also have noticed that we have the start of a wildflower meadow growing around the 'no-mow' orchard area, planted by last year's Eco Council, who also did a super job of keeping our young fruit trees watered during the dry summer months. We had a (very small) harvest of apples a few weeks ago and discovered some unusual heritage apples growing on one of our trees! We can't wait for larger harvests in years to come when the trees mature fully.



We are looking forward to some interesting projects this year, including working closely with Anglian Learning and our catering and waste management providers.



Our Librarians



OUR YEAR 6 LIBRARIANS HAVE BEEN BUSY CHOOSING A WINTER THEMED BOOK FOR EVERY CLASS TO ENJOY. THIS IS TO LAUNCH THE GOVERNMENT'S 'YEAR OF READING' INITIATIVE IN 2026. EACH CLASS HAS RECEIVED A WRAPPED PICTURE BOOK TO READ. THEY WILL THEN WRITE A 3 WORD REVIEW FOR THE REST OF THE SCHOOL TO SEE. THESE WILL BE DISPLAYED IN OUR ENTRANCE AREA FOR ANY CLASS TO ENJOY. NEXT TIME YOU'RE IN SCHOOL, HAVE A LOOK AT OUR READING RIVER DISPLAY TOO. HERE YOU CAN SEE EVERY ASPIRATIONAL BOOK THAT IS TAUGHT IN OUR ENGLISH CURRICULUM FROM RECEPTION-YEAR 6. LOOK OUT FOR MORE READING FOR PLEASURE EVENTS IN THE NEW YEAR!

Mrs Walker





Anglian Learning Panathlon challenge November 2025



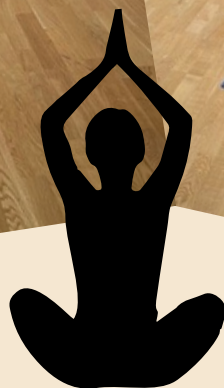
AT THE BEGINNING OF NOVEMBER, WE TOOK A TEAM OF 12 CHILDREN FROM YEAR 2, 3 AND 4 TO MARLEIGH PRIMARY ACADEMY TO TAKE PART IN THIS INCLUSIVE SPORTS EVENT WITH OTHER SCHOOLS IN OUR TRUST. OUR TEAM SHOWED GREAT TEAMWORK AND SPORTSMANSHIP AS THEY TRIED NEW ACTIVITIES AND CAME BACK TO SCHOOL AS BRONZE MEDALLISTS!



Yoga Festival



Earlier this month, 12 pupils from Years 3 and 4 were provided with a wonderful yoga experience at a festival which was part of the latest Anglian Learning Sports Alliance. The pupils discovered that all you need is a small amount of space to exercise and be able to support both their physical and mental health.





Acorns - Preschool



Acorns Preschool Class have really enjoyed exploring autumn. The children have been busy looking for signs of autumn and talking about the changes they have noticed in the natural environment. We enjoyed a nature walk in the sunshine, collecting lots of leaves and sticks and making autumn pictures back in the classroom. The children have created a wonderful wall display - consisting of firework pictures, autumn tree paintings and autumn leaf colouring. They have also made some super clay hedgehogs complete with twiggy prickles and given them 'hedgehoggy' names!





MAKING HEDGEHOGS



Apply now



for a Reception school place for September 2026

If your child
will be aged 4
by **31st August**

You need to
apply **NOW**
for a School
place



**Apply by
15th January
2026**

For further information please visit
www.cambridgeshire.gov.uk/admissions
or contact your local School

Contact the Admissions Team by telephone 0345 045 1370

School Admissions ALC2605, PO Box 761, Huntingdon, PE29 9 QR or
email admissions@cambridgeshire.gov.uk



**Primary School Newsletter
Update from Jonathan Culpin
Dec 2025**

As CEO of Anglian Learning, the school Trust which supports your child/ren's school, I would like to share some key highlights of the work undertaken in the last few months. These activities have benefitted the pupils, workforce and communities of our Trust.

Perhaps the main highlight of the term involving our primary schools was Inspire 25, held at Stapleford Granary in south Cambridge. Combining music, art, the spoken word and light, pupils from across our Trust came together for this immersive experience to create unforgettable memories, and an example of the power of an organisation like Anglian Learning to support access to the arts.

Following our successful Platform 25 event, which publicly showcases secondary school pupils' artwork, I am pleased to see the launch of the Primary Platform 26 exhibition, where pupils' artwork from across our primary schools will be selected for a public exhibition in Sawston.

We also launched Anglian Learning's long-term strategy, which has three main areas of focus: Belonging by Design, Great Schools and Connected Communities. Next term, I will share with you more information about this strategy. We have already started to drive forward in each area, including the launch of webinars to support parent, carer and pupil wellbeing as part of Belonging by Design and working in partnership with the Foundation for Young People's Mental Health. More details can be found here.

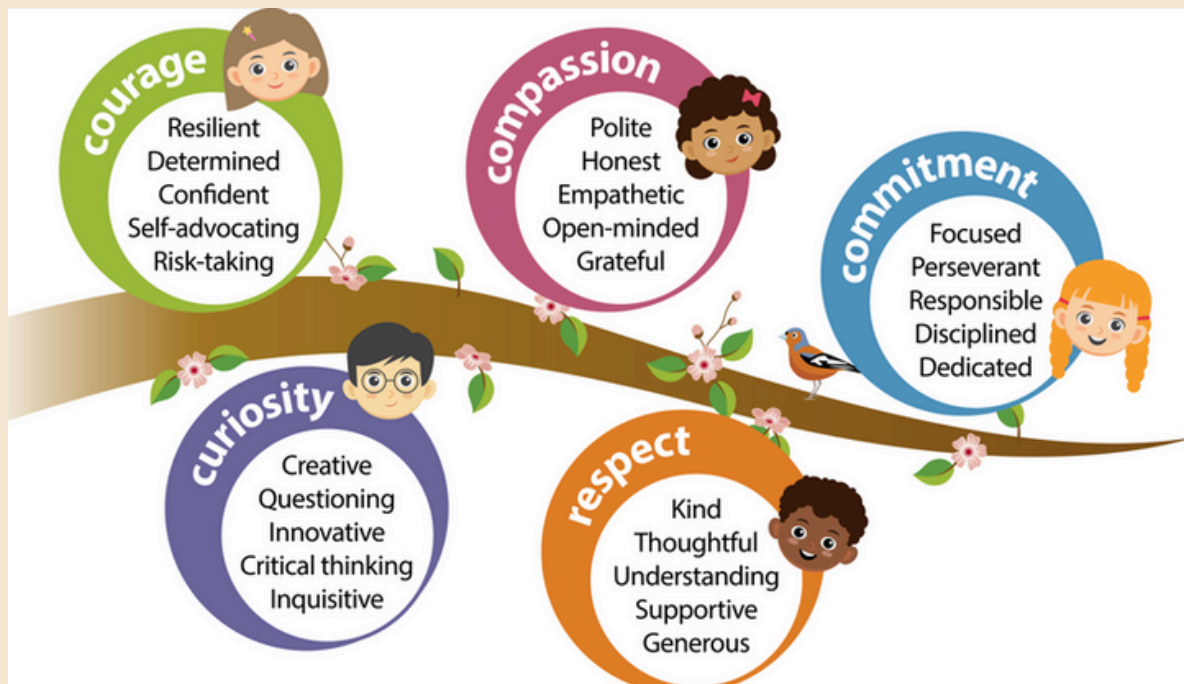
We have also been supporting the development of our school estate, using government funding to invest in EV chargers, refurbishing numerous classrooms, toilets and play facilities and, most ambitiously, working alongside the Department for Education to start the remodelling of Sawston Village College.

Lastly, in January, we look forward to welcoming three new primary schools to our Trust: Kennett Primary School, The Shade Primary School and The Weatheralls Primary School. The three schools' visions and values align well with Anglian Learning's, making them a perfect fit for our community. We look forward to learning from each other and inviting their pupils to take part in our Trust-wide events, such as the Primary Platform 26 Exhibition.

I wish all families a restful break, and thank you for your continued support as we work together. For more information on our Trust's activities, please visit our website www.anglianlearning.org, or follow us on Facebook, Instagram and LinkedIn.

Jonathan Culpin, CEO

Our Values and Priorities



Embed a strong values culture across the school

A shared positive and ambitious vision, ethos and culture, based upon the highest expectations of all members of the Bottisham's community.



High quality teaching and learning

Highly effective teaching and learning which enables successful outcomes for all learners
Teaching is inclusive, reflecting high expectations for all pupils, regardless of need or background.



Inclusion – Sense of belonging

An increase in academic engagement and achievement. Pupils have improved self-esteem and better mental health, as well as increased attendance rates for all cohorts.



Additional Areas of Focus

In addition to our 3 main strategic priority areas, we recognise that there are always other areas of school development that require some focus on a **yearly basis**.

Parental controls guides

Activate parental controls to manage children's devices, apps and platforms, to give them safer online experiences.

 FIND A GUIDE

SEE SAFETY CHECKLIST

Activate



The link below will take you to a brilliant website. Parental controls can be used to manage screen time, block inappropriate content, prevent accidental spending, and keep strangers away. Research shows they improve digital wellbeing when used alongside regular conversations about online activities.

Parental controls and privacy settings guides | Internet Matters



Parental controls & privacy settings guides

Learn how to set up parental controls and privacy settings on devices, apps, and platforms to help keep your child safe online.

 Internet Matters



The Prospects Trust is a meaningful work, skills and training provider empowering adults with additional needs and autism from across the region. We offer practical supported work placements on our beautiful Organic farm in nearby Reach, at 'Unwrapped' our bustling Wholefood store in Ely and out and about in the community on our Garden Team. Snake Hall Farm is a real 18 acre farm sustainably growing Organic vegetables, produce and homespun crafts throughout the seasons.

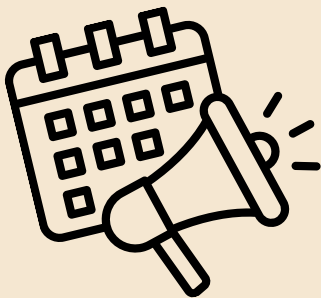
Not only can you buy our produce in our dawn-till-dusk shop in Reach but also at one of our weekly stalls in the local community ...

On a Thursday we can be found at The Wheatsheaf pub in Exning between 11am and 12pm and new this season is a second Thursday stall - at The Bell in Bottisham between 1pm and 2pm. We bring seasonal vegetables, flowers, crafts and more so come and find us, we look forward to seeing you!

Prospects Trust - at Snakehall Farm, Unwrapped and Garden Team

School Events

SPRING TERM EVENTS	
DATE	EVENT
Thursday 8th January	Vision Screening - Reception only
Tuesday 3rd February	Dental Survey Team - 5yr old's only
Monday 9th-12th February	Bikeability Year 5 only
Monday 16th February	Half Term Week
Wednesday 11th March	Alice in Wonderland - M&M Theatrical company
Thursday 26th March	Bentley Photography - Leavers/Class Photo's
Monday 30th March	Easter Holidays
Monday 13th April	Start of Summer Term



PTA Events

Event	Date	Time/Location
PTA AGM	22 nd September 2025	7 pm online
Autumn disco	22nd October 2025	5 pm School Hall
Christmas fair	5th December 2025	4:30 – 7 pm in School Hall
Elfridges	15th December 2025	9 am in ???
Disney singalong	4 th February 2026	4:30 – 6:30 in school hall
Movie night	4 th March 2026	4:30 – 6:30 in school hall
Easter trail, crafternoon and cakes	20 th March 2026	3:30 - 5:30 in school hall and school field
Lolly Fridays	From 17 th April 2026	After school on field
Break the rules day	1st May 2026	During school day
Summer fair/Circus**	3 rd July 2026	Field 3.45 – 7 pm
End of year disco and leavers party	16 th July 2026	5 – 8 pm School Hall

Attendance

Last year we managed to hit our ambitious target of 96% for our overall school attendance. We wanted to thank you for your support. This meant that our school was in the top 15% of all schools nationally. We would again appreciate your support to maintain these levels as there is a direct link with pupils achieving excellent outcomes and good attendance.



Year Group	Attendance %
R	96.4
1	90
2	95.5
3	93.7
4	93.9
5	96.8
6	96.1

Overall attendance is 94.5%

Can we politely remind parents and carers to inform the school office if your child is unwell. Where possible try to avoid being late as this can be very disruptive for the rest of the class and unsettling for your child too. The doors open at 8:50am. Register is taken at 9:00 am

Data Protection

If you have changed address or telephone number or you need us to amend our records please speak to the school office. Can we also remind you that you can opt out at any time for your child's photograph to be used by any third party

Safeguarding



We take the Safeguarding of the pupils at Bottisham Community Primary School as our upmost priority. If you have any worries about a young person, please do not hesitate to contact the school and ask to speak to a member of our designated safeguarding team. Alternatively you can email head@bottishamprimary.org¹