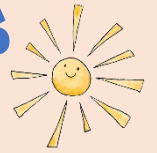




YEAR 1/2 NEWSLETTER - SUMMER 2026



Dear Parents and Carers

Welcome back to school! It has been lovely to hear what the children have been doing during the holidays. We are looking forward to busy summer term!

Miss Cridland and Mrs Swift

Topics

This term, topics will be '**Field to Fork**' and '**Space Pioneers**'. Where appropriate, subjects will be taught linked to these topics. Please see the topic web for more details.

Homework

In a change to last year, homework tasks will now be given on paper and on Google Classroom each **Thursday** to be handed in by the following **Tuesday (Y2), Wednesday (Y1)**. Homework tasks should be completed in your child's yellow homework book. **Please stick any additional sheets into the book.** Children will be tested on their spellings on the following **Thursday**. Tests will be completed in a spelling test book and sent home so you can see your child's results. Please keep this book in your child's book bag.

Reading Books

Book change day: Monday (Beech Class) and Wednesday (Hazel Class)

We will only change books weekly if they have been read twice (up to and including BB6). Each class has a dedicated book change day where all reading records will be checked. If children require additional reading materials between book change days, they can choose a book themselves from our additional reader book box.



Children should bring their reading books and reading records to school each day. We would appreciate it if water bottles were not stored with reading books as they are easily damaged by spills and leaks and single books cannot be easily replaced. **Lost or damaged reading books will be charged at a cost of £5 per book.**

Forest Schools

The children in Hazel class will be having Forest Schools sessions again this term and you will shortly receive information about this. These sessions will be on:

Thursday 30th April

Thursday 7th May

Thursday 14th May

PE Sessions

Hazel class: Tuesday (Fundamentals) and Friday (Net and Wall Games)

Beech class: Thursday (Fundamentals) and Friday (Net and Wall Games)

To help your child with these sessions please ensure that they wear clothes that they can change **independently**. Clothes must be **clearly named**. **No earrings on P.E. days please**; earrings must be removed before PE lessons. Please ensure that children also have suitable outdoor kit and footwear for colder weather and suncream and hats for warmer days.



Indoor Shoes

Children need **named** hard-soled indoor shoes to wear inside the school building. They must also be appropriate for occasional outdoor use in the event of a fire drill or walking across the courtyard, for example.

Jewellery and Toys

We have a **no jewellery** expectation at BPS. Children are only allowed to wear studs in their ears in school.

No toys (including trading cards) in school unless this has been agreed for a specific reason with your child's class teacher.

Lost Property

Please make sure that all items of clothing including shoes/boots and plastic snack-boxes are **named** before they are brought into school so that they can be quickly returned if misplaced.

If you need a replacement item of uniform, Eco Council regularly sell items in our pre-loved uniform shop at school events for a 50p donation per item. Money raised funds school Eco Council activities.

Communication

During term-time, we are available for short conversations at the classroom door at the start and end of the day. If you require a longer conversation, please arrange a meeting with your child's class teacher at a mutually convenient time.

We can be contacted by e-mail from Monday – Friday between 8.00 – 17.30. As per Anglian Learning policy, e-mail acknowledgements are guaranteed within two working days and a response within five working days. We will of course endeavour to respond as promptly as possible. **Please note that we may not always be able to read or respond to e-mails during the school day. If a message is urgent, please contact the school office by telephone.**

Hazel Class Information

Class Teacher: Mrs Swift
Teaching Assistants: Mrs Boyce, Mrs Paul
Cover Teachers: Miss Dilley, Mrs Childs
Contact: hswift@bottishamprimary.org

Beech Class Information

Class Teacher: Miss Cridland
Teaching Assistants: Mrs Missing
Cover Teachers: Mrs Robinson
Contact: ecridland@bottishamprimary.org

Summer Term Dates for Your Diary

KS1 Multi-skills Festival at BVC: Friday 17th April
Earth Day: Wednesday 22nd April
Beech Class Assembly: Wednesday 29th April @ 2.30pm
Bank Holiday: Monday 4th May
Year 1/2 visit to Wimpole Hall: TBC (date change due to transportation issues)
Hazel Class BVC Library visit: Wednesday 13th May (am)
Beech Class BVC Library visit: Wednesday 20th May (am)
Training Day (school closed to pupils): Friday 22nd May
Half Term: Monday 25th-Friday 29th May
Premier Sports Penalty Kick Event: Thursday 4th June
Art Showcase Event: Thursday 11th June
PTA Circus: Friday 3rd July

KS1 Sports Day: Wednesday 8th July (am)

End of term: Friday 17th July