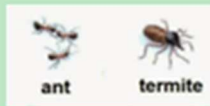


Carl Linnaeus- the C18 Swedish biologist created a classification system to identify plants and animals.

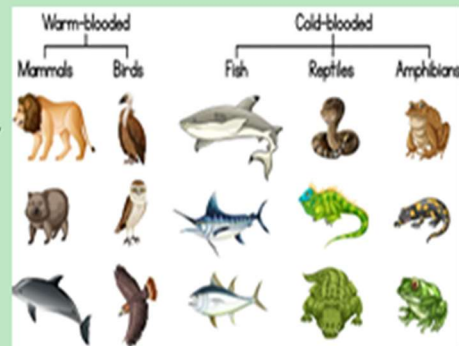


Invertebrates
(without a backbone)



Animals

Vertebrates
(with a backbone)



dichotomous key
yes/no questions

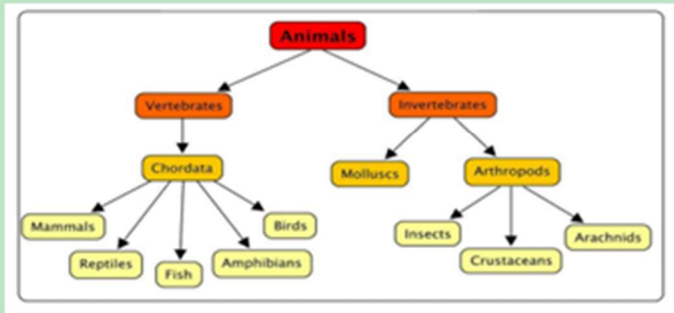
Y5/6 Classification

micro-organism

a living thing too small
to be seen by the eye



branching database



Plants

producers- make their own food

flowering



non-flowering

